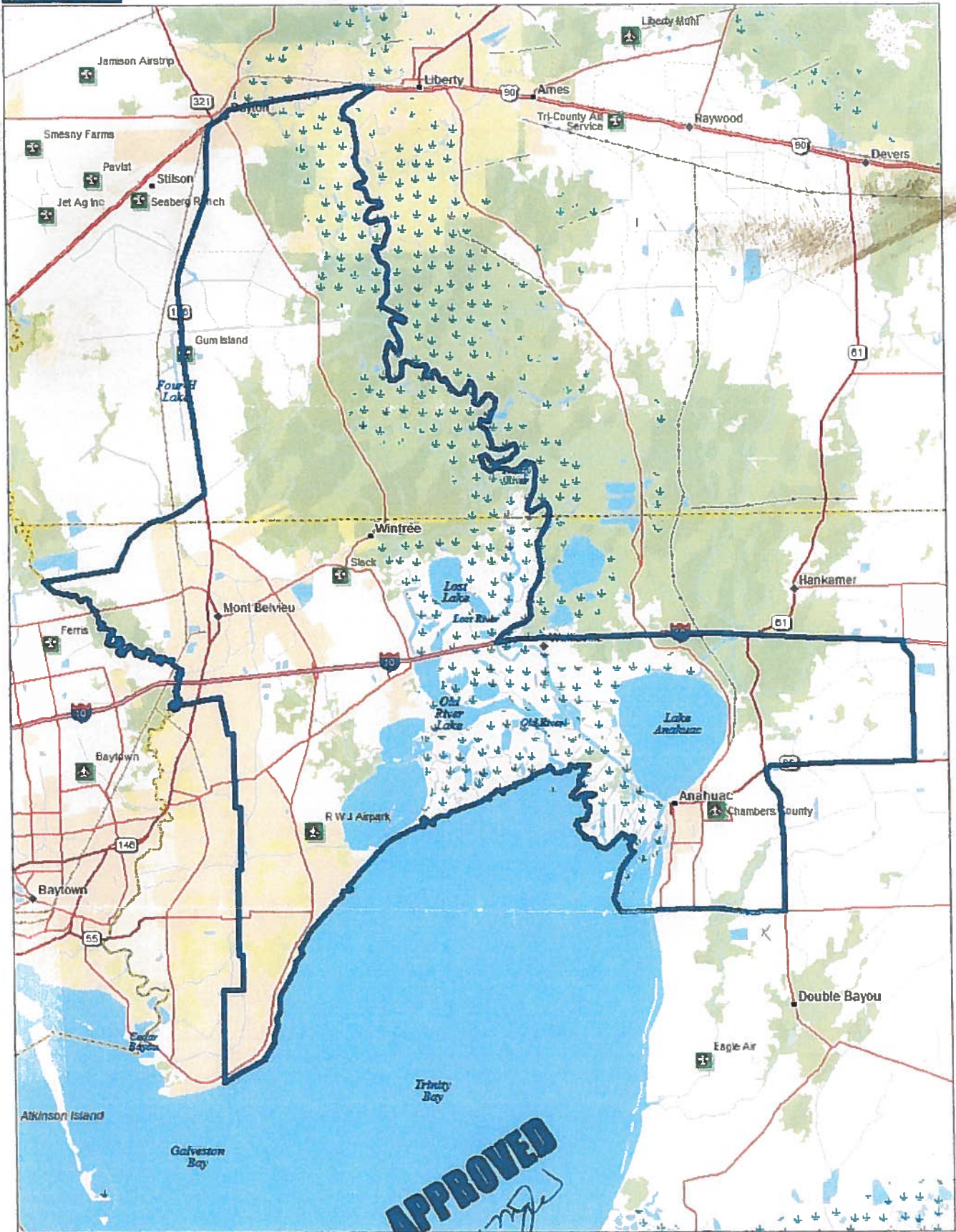


RECEIVED MAY 16 2007

DeLORME

Topo USA® 6.0



BARBER'S HILL U 3481212

APPROVED *[Signature]*

Data use subject to license.

© 2006 DeLorme. Topo USA® 6.0

www.delorme.com

Thomas E. Edge
Acting D.A. 5-11-07

★
MN (3.4° E)



Data Zoom 9-7

David Anders
BHM President 5-11-07

RECEIVED MAY 16 2007

**BARBERS HILL LITTLE LEAGUE
BOUNDARY LINES**
(See attached map)

**Barbers Hill Little League
District 17
League ID #343-12-12**

North Boundary
State Hwy 90

South Boundary
Trinity Bay West of Trinity River
FM 2936 East of Trinity River

East Boundary
Trinity River from SH90 to IH10
South of IH10, East boundary line is FM 1724, South to SH65
East boundary line South of SH65 will be FM 562, South to FM 2936

West Boundary
North of IH10 – Chambers County / Harris County line North to Liberty County Line
North of Liberty County line – SH146 North to SH90
South of IH10 – Old Needlepoint Rd. to school district line between Barbers Hill ISD and Goose Creek CISD

Field Location
IH10 to SH146 at Mont Belvieu – North on SH146 to Langston Drive – East on Langston Drive – dead end into McLeod Park.